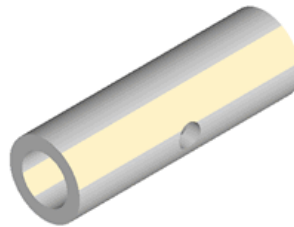
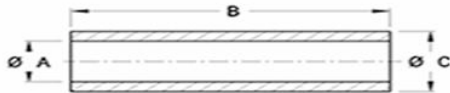




Molding Today's Ideas for Tomorrow's Solutions

www.aucilla.com  
574-234-9036

### Spanners: Straight Style



PART NO.	A	B	C	Material
LS-58035	0.312	1.035	0.500	Mineral filled Nylon 6/6
LS-5826-1493	0.318	1.620	0.500	Mineral filled Nylon 6/6
LS-5827-1866	0.318	1.687	0.500	Mineral filled Nylon 6/6
LS-5820	0.315	1.250	0.500	Mineral filled Nylon 6/6
LS-5820H*	0.315	1.250	0.500	Mineral filled Nylon 6/6
LS-5825	0.315	1.562	0.500	Natural Nylon 6/6
LS-5825H*	0.315	1.562	0.500	Natural Nylon 6/6
59044X44	0.315	2.750	0.500	Natural Acetal
LS-6824H-2071*	0.380	1.495	0.495	Mineral filled Nylon 6/6
LS-6824	0.380	1.495	0.500	Mineral filled Nylon 6/6
LS-6826	0.380	1.625	0.500	Mineral filled Nylon 6/6
LS-6826H*	0.380	1.625	0.500	Mineral filled Nylon 6/6
ZF06082701	0.380	1.700	0.495	Talc Filled Polypropylene
API-2407	0.380	1.708	0.500	Mineral filled Nylon 6/6
LS-6829	0.380	1.820	0.500	Mineral filled Nylon 6/6
LS-6829H*	0.380	1.820	0.500	Mineral filled Nylon 6/6
LS-61025	0.380	1.563	0.625	Mineral filled Nylon 6/6
LS-61025H*	0.380	1.563	0.625	Mineral filled Nylon 6/6
LS-61027	0.380	1.688	0.625	Mineral filled Nylon 6/6
LS-61027H*	0.380	1.688	0.625	Mineral filled Nylon 6/6
LS-61029	0.380	1.813	0.625	Mineral filled Nylon 6/6
LS-61029H*	0.380	1.813	0.625	Mineral filled Nylon 6/6
LS-61227-2153	0.380	1.687	0.750	Mineral filled Nylon 6/6

LS-61227H-2154*	0.380	1.687	0.750	Mineral filled Nylon 6/6
LS-81224	0.505	1.500	0.750	Mineral filled Nylon 6/6
LS-81224H*	0.505	1.500	0.750	Mineral filled Nylon 6/6
LS-81230	0.505	1.875	0.750	Mineral filled Nylon 6/6
LS-81230H*	0.505	1.875	0.750	Mineral filled Nylon 6/6
LS-81237	0.505	2.312	0.750	Mineral filled Nylon 6/6
LS-81237H*	0.505	2.312	0.750	Mineral filled Nylon 6/6
LS-81239	0.505	2.440	0.750	Mineral filled Nylon 6/6
LS-81239H*	0.505	2.440	0.750	Mineral filled Nylon 6/6